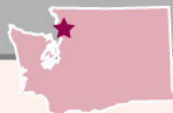
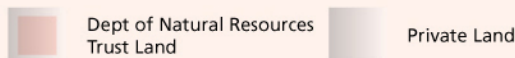


2009

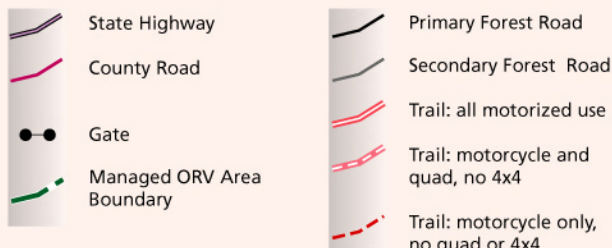
Walker Valley ORV Trail System



Land Ownership



Road and Trail System



Locations



On DNR Land

- Fires are only allowed in designated fire pits.
- Pack out garbage and litter.
- Do not alter or remove vegetation.
- Do not ride in streams, muddy areas, wetlands, or on road embankments.

On DNR Roads

- Only licensed drivers, street-legal, or valid ORV tagged vehicles are allowed.
- Riders under the age of 13 years old must be under direct supervision of a person who has a valid drivers license and is at least 18 years of age.
- Helmet required for quads and motorcycles.
- Speed limit is 25 miles per hour.
- Be ready to yield right of way to heavy equipment and logging trucks.

On DNR Trails

- Ride from dawn to dusk only.
- Stay on signed, DNR-managed trails.
- Unsigned trails are closed.
- Respect the rights of others.
- Watch for unmarked hazards on trails; report hazards.

At the Trailhead

- Use the trailhead area only for entering and exiting the trail system.
- Ramps are for loading and unloading only.
- Follow posted rules at Beginner's Riding Area.
- No shooting and/or paintballing in DNR designated recreation sites.
- No garbage service is provided. Pack out garbage and litter.
- Speed limit is 5 miles per hour.

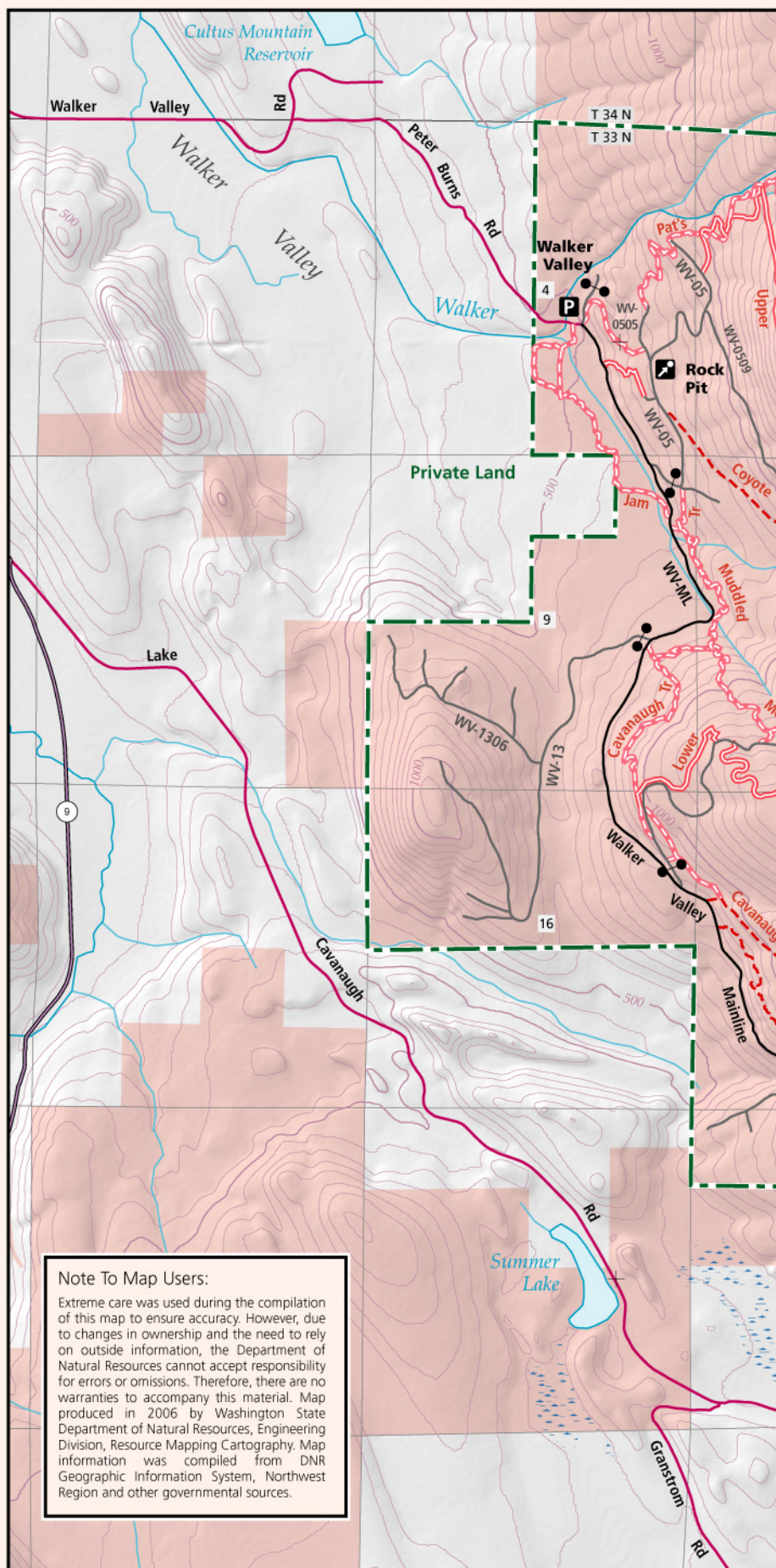
To report hazards, or for questions call the
DNR Northwest Region office at 360-856-3500.



Scale: 1 inch on the map represents
0.5 mile on the ground



WASHINGTON STATE DEPARTMENT OF
Natural Resources
Peter Goldmark - Commissioner of Public Lands



Note To Map Users:

Extreme care was used during the compilation of this map to ensure accuracy. However, due to changes in ownership and the need to rely on outside information, the Department of Natural Resources cannot accept responsibility for errors or omissions. Therefore, there are no warranties to accompany this material. Map produced in 2006 by Washington State Department of Natural Resources, Engineering Division, Resource Mapping Cartography. Map information was compiled from DNR Geographic Information System, Northwest Region and other governmental sources.